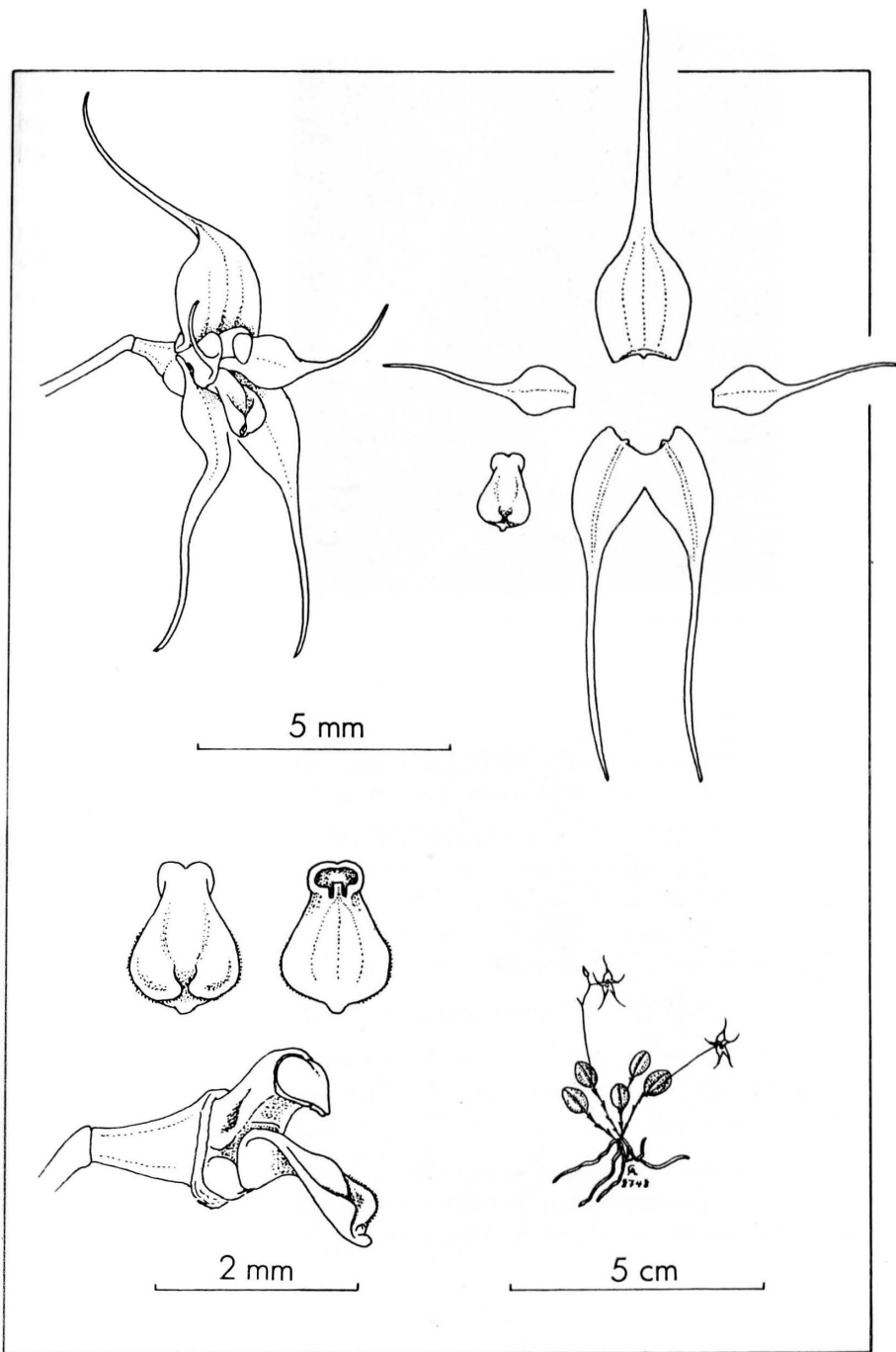


Trichosalpinx ballatrix Luer & Escobar, sp. nov.

Planta perparva dense caespitosa, racemo subtili paucifloro foliis late ellipticis multilongiore, sepalis petalisque longicaudatis, labello crasso obovato bicalloso basi cum pede columnae articulato.

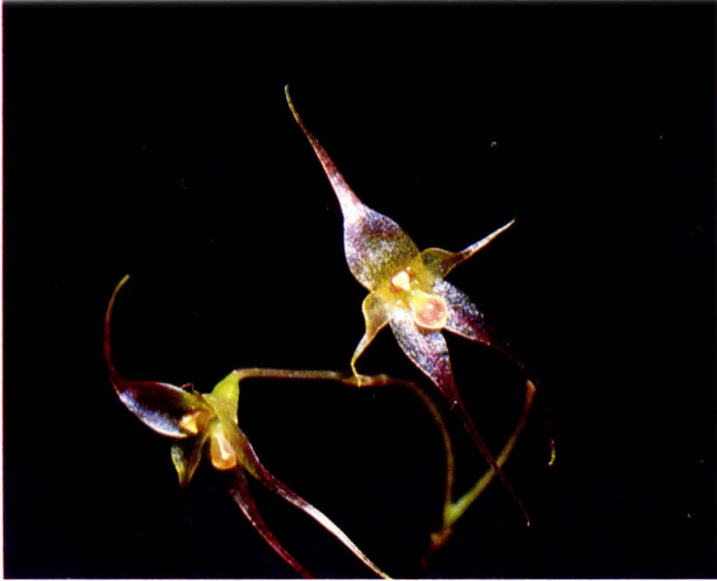
Plant very small, epiphytic, densely caespitose; roots slender. Secondary stems slender, 3-10 mm long, enclosed by 2-3 minutely scabrous lepanthiform sheaths. Leaf erect, coriaceous, mottled with purple beneath, broadly elliptical, obtuse, 6-10 mm long, 4-6.5 mm wide, cuneate below into a 1 mm long petiole. Inflorescence a delicate, loose, 2- to 3-flowered raceme 20-40 mm long including the filiform peduncle; floral bract 1.5 mm long; pedicel 2-3.5 mm long; ovary 0.75 mm long; sepals light yellow, suffused with rose, especially along the veins, glabrous, ovate, carinate, the acute apices attenuated into slender tails, the dorsal sepal 7 mm long, 2 mm wide, the lateral sepals oblique, 7 mm long, 1.3 mm wide, connate basally; petals translucent yellow, obovate basally, the acute apex long-attenuate, 3.75 mm long, 1 mm wide; lip yellow, suffused with rose above the middle, thick, microscopically pubescent, obovate, 1.5 mm long, 1.1 mm wide, the rounded apex with a short, round apiculum, the disc thickened with a pair of low, rounded calli along either margin with a shallow, central concavity, the narrowed base thickened with a concavity on the end to accommodate the apex of the column-foot; column stout, 1 mm long, the thick foot articulated with the base of the lip.

ETYMOLOGY: From the Latin *ballatrix*, "a ballet dancer," in fancied allusion to the flowers.



Trichosalpinx ballatrix

Illustration: Carlyle A. Luer



Photography: Rodrigo Escobar

Trichosalpinx ballatrix

ETIMOLOGIA: Del latín *ballatrix*, "bailarín de ballet", en fantástica alusión a la apariencia de las flores.

TYPE: *COLOMBIA*: ANTIOQUIA: Munic. of Medellín: epiphytic in cloud forest west of Medellín, east of Boquerón, alt. 2.380 m 22 Apr. 1983, C. Luer, R. Escobar et al. 8748 (Holotype: SEL); Munic. of Abriaquí, Río Herradura, alt. ca. 2.500 m, 13 May 1983, R. Escobar & E. Valencia 2588 (JAUM; SEL).

DISTRIBUTION: Colombia, Central and Western Cordilleras.

This graceful little species is known from two localities. The tiny pinkish flowers are long-tailed. The thick lip is articulated with the column-foot.

Esta graciosa pequeña especie es conocida de dos localidades. Las pequeñas rosaduzcas flores son de caudas largas. El grueso labelo está articulado con el pie de la columna.